

MONTHLY MEMBERSHIP PROGRESS REPORT

District 2 X3

Results as of: 12/31/2019

GMT:

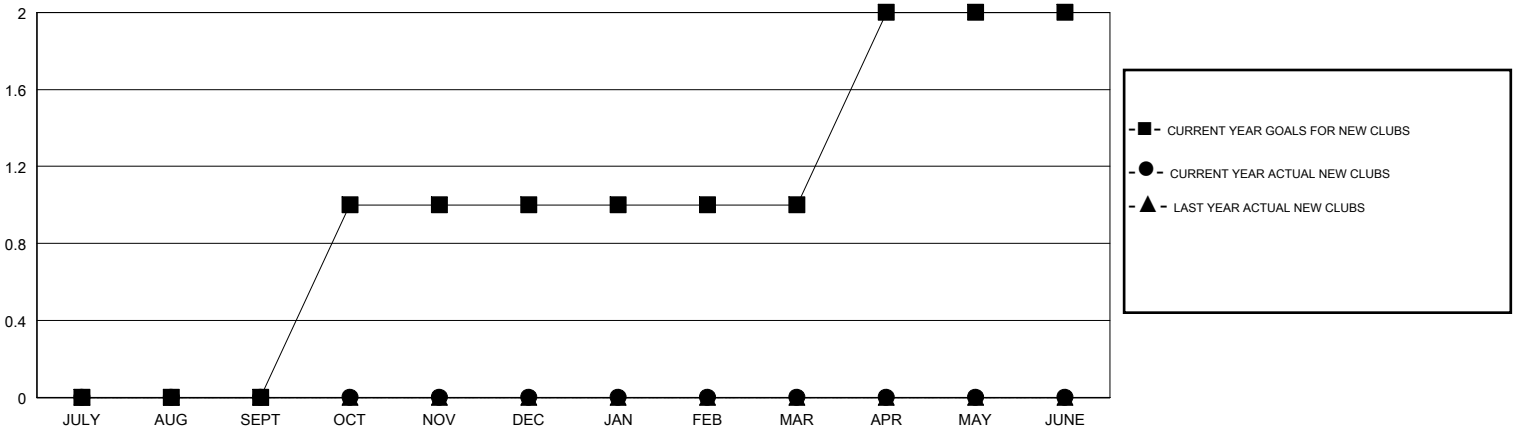
LOCATION TEXAS

GMT CA

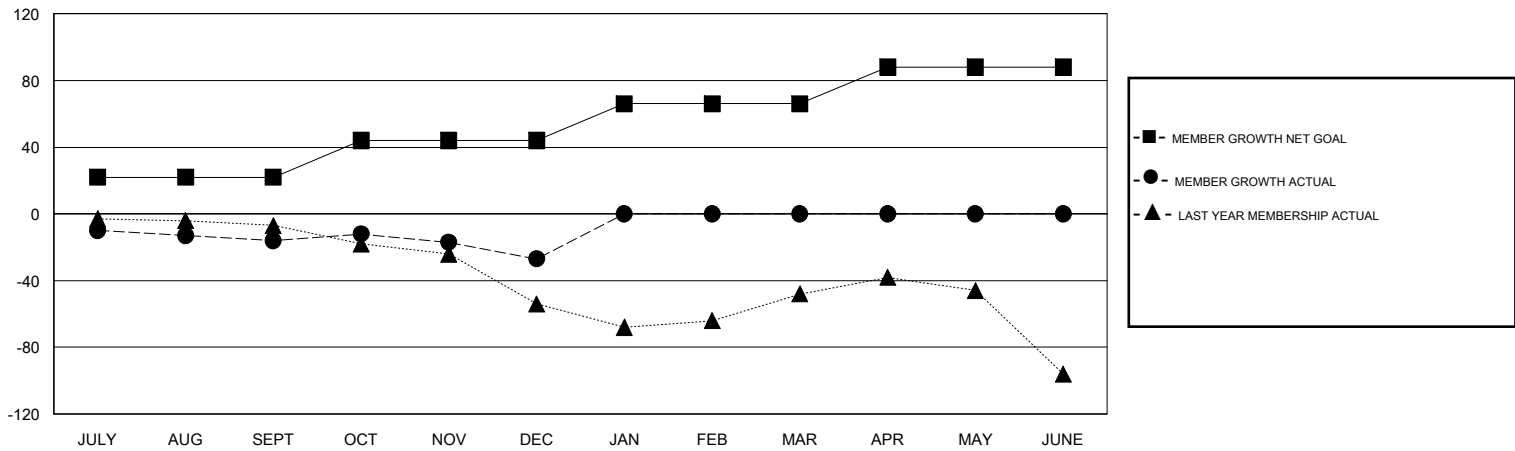
Clubs			
RESULTS FOR 2019-2020			
QUARTER	NEW CLUB GOAL	NEW CLUBS	DROPPED CLUBS
JULY/AUG/SEPT	0	0	0
OCT/NOV/DEC	1	0	1
JAN/FEB/MAR	0	0	0
APR/MAY/JUNE	1	0	0

Members			
RESULTS FOR 2019-2020			
QUARTER	MEMBER GROWTH NET GOAL	MEMBER GROWTH ACTUAL	DROPPED MEMBERS ACTUAL (including transfers)
JULY/AUG/SEPT	22	49	60
OCT/NOV/DEC	22	48	53
JAN/FEB/MAR	22	0	0
APR/MAY/JUNE	22	0	0

GOALS AND ACTUAL NEW CLUBS CUMULATIVE



GOALS AND ACTUAL MEMBERS CUMULATIVE



DROPPED CLUBS: 1	28 CLUBS OF 50 ADDED 1 OR MORE NEW MEMBERS	<u>GENDER DISTRIBUTION</u> MALE 914 (63.92%) FEMALE 516 (36.08%)
<u>DROPPED MEMBERS</u> DECEASED 3 CLUB CANCELLED 0 OTHER 110 <hr/> TOTAL 113	CLICK HERE FOR CUMULATIVE MEMBERSHIP DATA	TOTAL FAMILY UNIT MEMBERS 176 FAMILY MEMBERS PAYING HALF DUES 88